

Skydio 3D Scan™



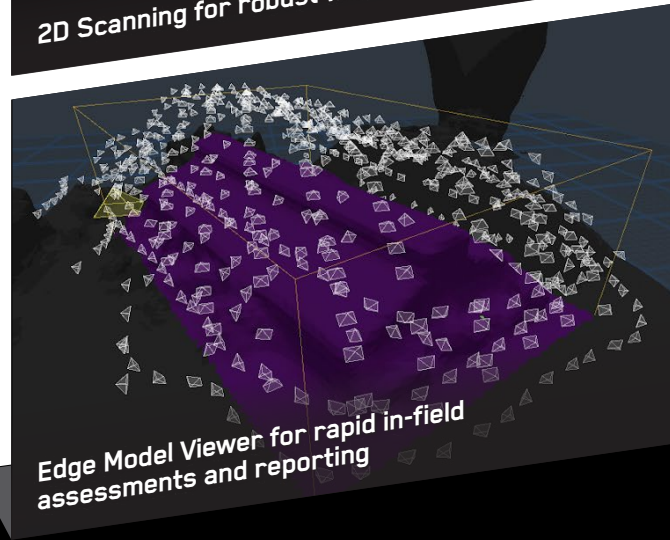
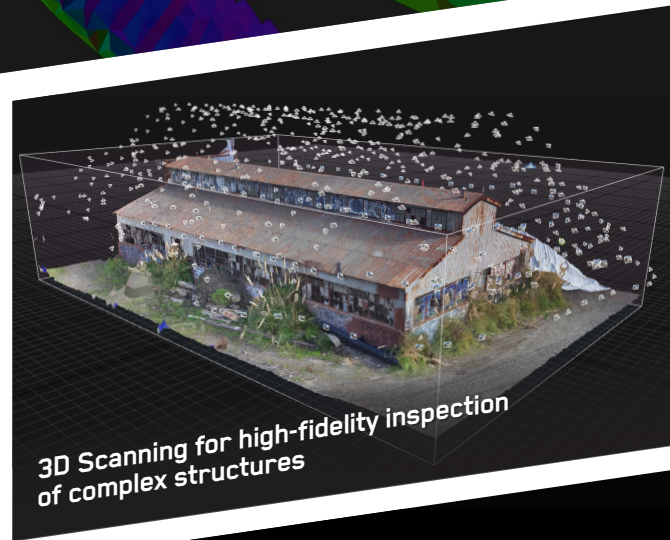
A new era of mapping, structure inspection, and scene reconstruction

Skydio 3D Scan™ is first-of-its-kind adaptive scanning software built on top of Skydio Autonomy, the autonomous flight engine behind every Skydio drone. 3D Scan builds a model of the scene, allowing the drone to automate the data capture process needed to generate 3D models with comprehensive coverage and ultra-high resolution. That means crews can perform higher quality inspections in less time and with minimal pilot training.

Never trade off quality for safety again. Legacy 3D modeling based on manual drones requires pilots to fly far from their inspection subjects to avoid collisions, while trying to guarantee sufficient data capture using rudimentary waypoint flights or simply guess-as-you-go manual flight. The result is an inefficient and high-risk process for even the most skilled pilots, lengthier photogrammetry processing times, and ultimately lesser model quality.

Seamlessly improving existing photogrammetry workflows

The precise, visually geotagged imagery generated by 3D Scan can be exported to any mainstream photogrammetry software (including, but not limited to, DroneDeploy, Pix4D, Bentley ContextCapture and Reality Capture), and will generate higher-quality, higher-resolution models without the mountains of extra data required by traditional capture methods.



DATA CAPTURE

up to
75% faster*

REINSPECT RATE

up to
30% reduced*

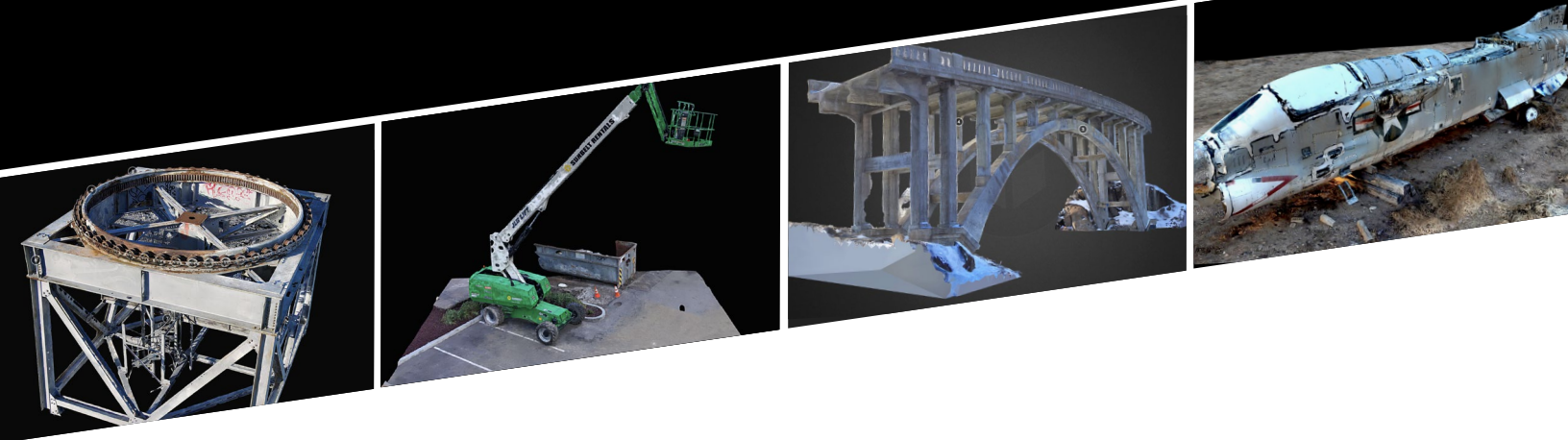
HARDWARE COST

up to
50% lower*

"3D Scan is going to save us so much time on image capture for 3D reconstructions, while adding safety for our teams and assets. The software knows how to capture the right data efficiently, and we can view the coverage map in the field, to make sure that we get all the data we need the first time around."

- JARVIS WORTON, JACOBS ENGINEERING

Jacobs



Generate higher-quality scans with less ramp-up time, flight hassle, and risk, with a suite of features designed for maximum usability, precision, and control.

3D SCAN FEATURES

ADAPTIVE MAPPING

Groundbreaking airborne data capture engine built on top of Skydio Autonomy to iteratively build a global map of complex surfaces using contour-hugging motion planning software. Reduces the need for pilots to plan photogrammetry capture flights by hand or settle for rudimentary automation.

2D CAPTURE

Drone will fly a planar lawnmower pattern with full obstacle avoidance while capturing cross-hatched photos to generate 2D orthomosaics. User can define the scan without reliance on GPS, LTE connection, or base maps.

3D CAPTURE

Drone will navigate autonomously through a user-defined scan volume, ensuring comprehensive capture of imagery to capture every surface at a predefined resolution and overlap. It enables complex scans, even in GPS-denied environments such as indoors and below overhangs, without requiring any prior knowledge about the structure.

VISUAL GEOFENCING

Operator can specify operating bounds by constraining the drone to the user-defined scan volume. Delivers higher precision than GPS-based methods by using boundaries that adapt to the scan volume, and helps reduce ground risk, e.g. crowded areas, bridges, highways, or in a tactical BVLOS waiver area.

EDGE MODEL VIEWER

Edge-computing solution that allows the operator to view a simplified 3D model of a scanned scene on a web app served directly from the drone to their laptop or mobile device in the field. Allows the operator to validate that they have full coverage of the scene, and use a spatial index to perform an in-field inspection.

DATA EXPORT

Operator can export scan photos, with full metadata from the drone's SD card for use in 3rd party photogrammetry software.

MULTI-BATTERY SCANS

Drone visually relocalizes with computer vision to pick up a scan where it left off, even without GPS. This saves flight time and prevents the collection of redundant data from multiple disconnected scans that can slow 3D reconstruction.



Contact enterprise@skydio.com today to learn more about integrating Skydio 3D Scan.

Designed and assembled in the USA